

GL.iNet GL-SFT1200 (Opal) Dual Band Router

Part 1:

Initial Setup of a brand new Router or after a full Factory Reset

Units supplied by Selfie Wizard are preconfigured, go to Part 2

Opal Default Factory Settings:

SSID: **GL-SFT1200-???**

WiFi Password: **goodlife**

Router Administration IP: **192.168.8.1**

Username: **root**

Password: **Will prompt for a new password on first use. Please use: swizswiz**

1. Download the Opal Firmware file to your laptop/PC from the owners area:
Swiz-GL-SFT1200-xxxx-xx-xx.tar.gz
2. The Opal requires internet access for the first time setup and installation of the configuration files
3. Connect the Opal to your home router using a LAN cable into the Opal **WAN** port.
4. Power on
5. From a laptop or PC connect to the Opal Wi-Fi using the settings above
6. In a web browser navigate to the admin panel at: **192.168.8.1**
7. Set Language
8. Set Admin password, please use: **swizswiz**
9. Select: More Settings > Advanced
10. Allow the Opal to download the 'Luci' installation list and click 'install Luci'
11. Once installed.. Click on the link to open the Luci Control Panel
12. Log in with username: root password: swizswiz
13. Select: System > Backup/Flash Firmware
14. Select: Restore Section > Restore Backup > Choose File
and select the supplied setup file: **Swiz-GL-SFT1200-xxxx-xx-xx.tar.gz**
Click 'Upload archive'
15. Allow 3 mins for the Opal to reboot..
16. Reconnect to the new WiFi SSID: Wizard
17. The control Panel will now be accessible using the following URL: 10.10.10.1

Continue to Part 2

Part 2:

The Opal router is Plug & Play ready to be used.

Simply connect the SW/Ninja to the Opal via a lan cable into either of the two LAN ports on the Opal.

Do not use the WAN port, this is reserved for direct cable connection for internet access

Opal Settings As supplied by Selfie Wizard Pre-configured (and after installing the Swiz firmware):

SSID for both 2.4 ghz and 5 ghz: **Wizard**

Password: **Not Set**

Router Administration IP: **10.10.10.1**

Username: **root**

Password: **swizswiz**

The Opal Router replaces the SW/Ninja built-in Wi-Fi to provide simultaneous dual band Wi-Fi access for guests at an event. The guests phone will select the better Wi-Fi band and seamlessly switch between the two.

There is currently no method to hide the SW/Ninja built-in Wi-Fi, this will be added in a future update. It is however inaccessible whilst the Opal router is connected.

- To prevent conflict and reduce the risk of interference set the SW/Ninja Wi-Fi SSID to something nondescript and different from the Opal router.
- Set the SW internal Wi-Fi channel to Ch 1 or 6 or 11
- Remove the external Antenna if being used and allow the unit to reboot without it.

The Opal is HotSpot compatible for internet access using any of these methods

- Direct cable to Modem/Router via Opal WAN port
- Venue Wifi
- Phone Tethering over HotSpot
- Phone Tethering over USB cable
- Mifi
- 4G LTE Dongles

The Opal takes over control of Wifi, DNS, IP Allocation, HotSpot Connection, internet access etc..

Any changes required to these settings will now need to be set from the Opal control panel at 10.10.10.1

Standard Use – No Internet Access

Connect SW to the Opal using the supplied LAN cable into one of the **LAN** ports.

The Router must be powered by its own separate power supply.

The SW cannot supply enough power over its built-in USB ports to keep the Opal stable.

The Opal will override several of the SW/Ninja settings including the local Access URL as it is providing the DHCP and DNS service.

The following access URL's are hardcoded to work:

- 10.10.10.10/
- selfiewizard/
- admin/
- selfie/
- kiosk/
- photo/ photos/
- print/
- upload/ uploads/

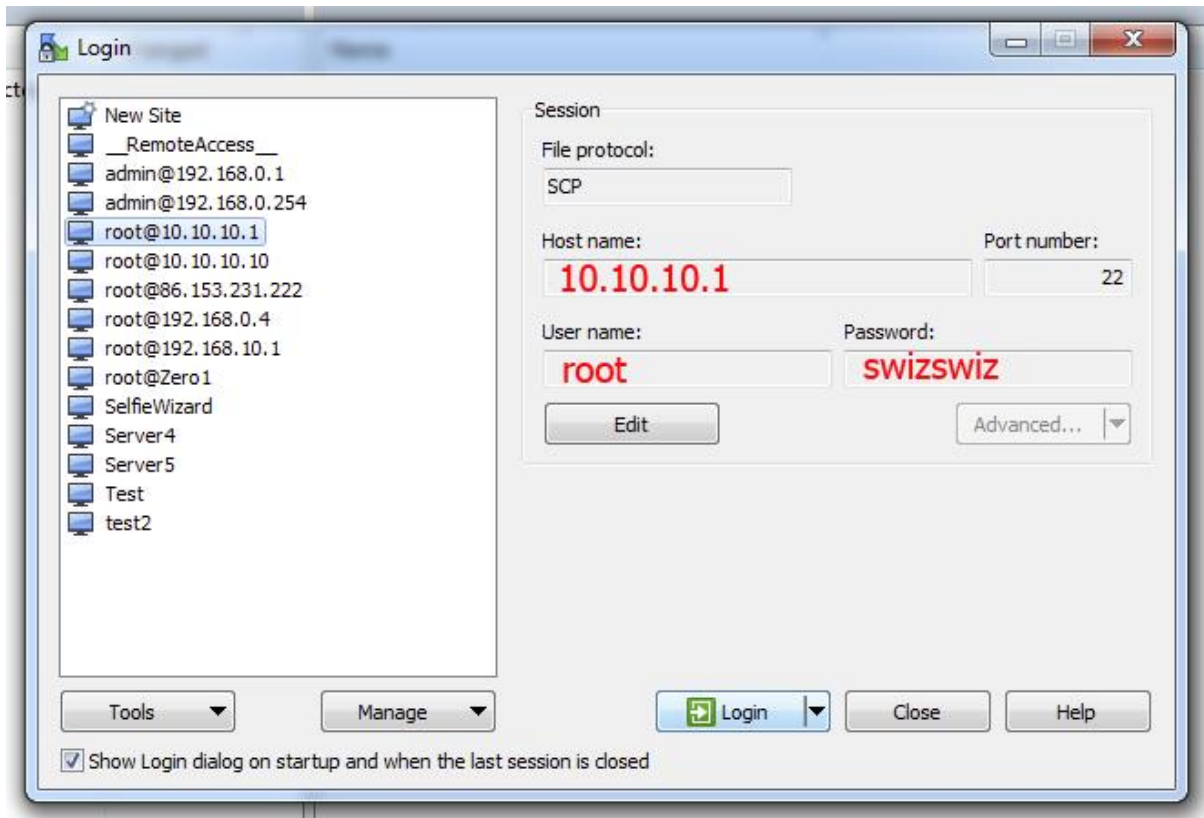
All of the above will also work with the .lan extension e.g. selfie.lan admin.lan

To change the Opal Wi-Fi SSID:

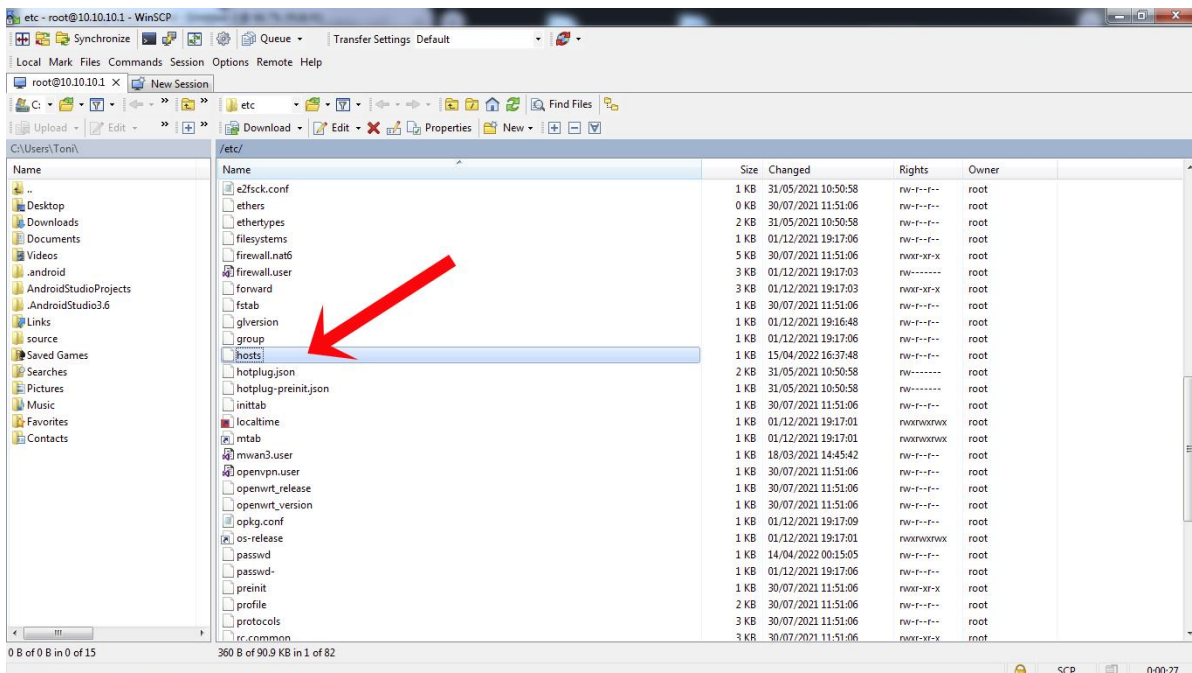
1. Connect your phone/pc/ipad to the Opal Wi-Fi.
2. In a web browser go to: 10.10.10.1/
3. Log in using root & swizswiz
4. From the menu select: Network > Wireless
5. Edit the SSID as required.
Use the same SSID for both 2.4 ghz and 5 ghz
Phones will automatically select the stronger network and seamlessly switch between networks.
6. Click 'Apply' to save changes

Adding Custom URL's:

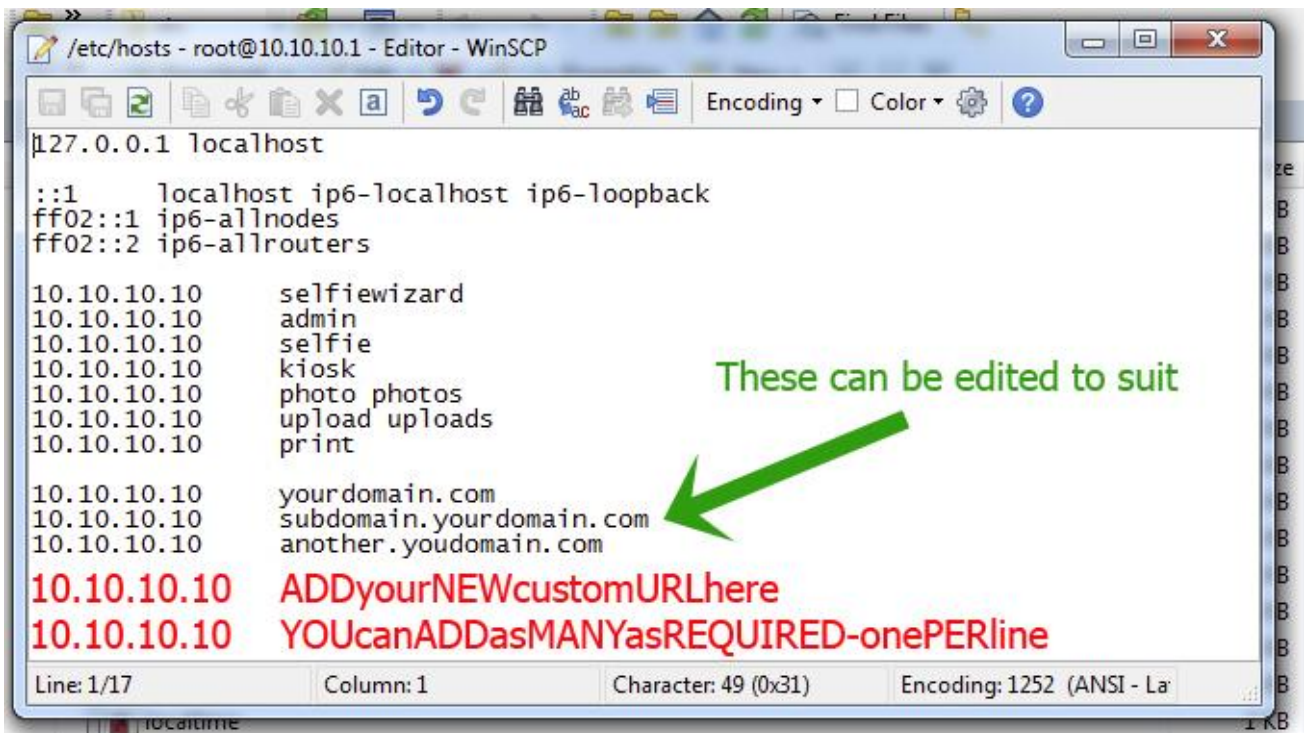
- On a laptop - Download and install WinSCP
- Connect laptop to the Opal Router
- With WinSCP log into the Opal via SCP



- In the explorer window navigate to /etc/hosts



- Double click to open the file for editing



```
127.0.0.1 localhost
::1 localhost ip6-localhost ip6-loopback
ff02::1 ip6-allnodes
ff02::2 ip6-allrouters
10.10.10.10 selfiewizard
10.10.10.10 admin
10.10.10.10 selfie
10.10.10.10 kiosk
10.10.10.10 photo photos
10.10.10.10 upload uploads
10.10.10.10 print
10.10.10.10 yourdomain.com
10.10.10.10 subdomain.yourdomain.com
10.10.10.10 another.youdomain.com
10.10.10.10 ADDyourNEWcustomURLhere
10.10.10.10 YOUcanADDasMANYasREQUIRED-onePERline
```

Line: 1/17 Column: 1 Character: 49 (0x31) Encoding: 1252 (ANSI - La)

- Custom URL's can be added at the bottom of the hosts file
No Spaces or Special Characters allowed in URLs
- Save the file

The Opal router will need to be rebooted for any new settings to take effect.

Internet Access:

- **Direct cable into the Opal WAN port to a home router**

Fully automatic - This method will always take priority over other connection methods.

The WAN cable will need to be unplugged for any of the below methods to work.

- **3g/4g LTE Dongle**

Fully automatic - Simply plug the dongle into the Opal USB port, allow 3 mins for the dongle to establish a connection. The dongle will require a working and pre-activated data sim.

- **HotSpot to Venue or MiFi or personal Phone Tether**

Select: Internet > Repeater > Scan

Select the HotSpot you wish to connect to from the list of found networks

Captive Portals :-

Will require additional log in credentials.

The exact sequence will vary by device and the captive portal setup

Android devices display a log in prompt

Opening any web site should also trigger the captive portal log in page